

School Assembly Notes

April 16, 2025

1. Welcome
2. Dean's updates
3. Innovation Research Networks; McLean
4. Other





1. Welcome

Dean Sandro Galea (sgalea@wustl.edu) welcomed attendees to the School of Public Health assembly.

School Assembly

April 16, 2025



Agenda

1. Welcome
2. Dean's updates
3. Innovation Research Networks; McLean
4. Other



2. Dean's Update

Dean Sandro Galea shared school-wide updates.

Agenda

1. Welcome
2. Dean's updates
3. Innovation Research Networks; McLean
4. Other

1. The moment



Donald Trump takes on America's elite

Institutions with (greater or lesser) longevity



2. What have we done, what is yet to do?

Progress, as of now, humans

36 primary faculty

27 secondary faculty

52 research staff

11 administrative staff

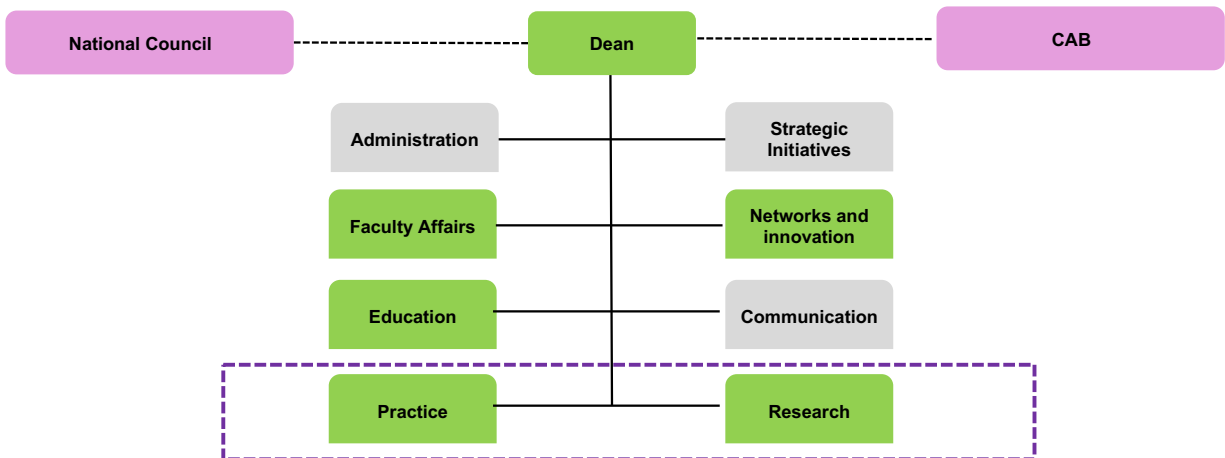


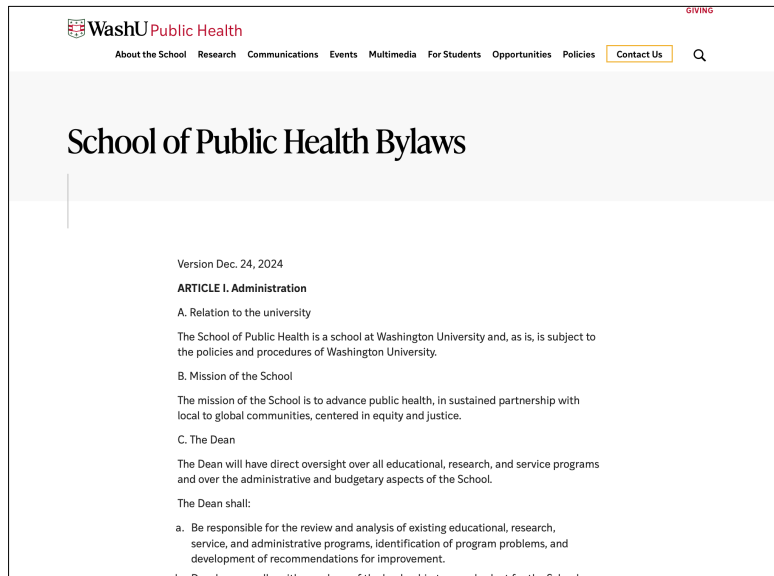
3. Building community

1. Governance
2. Culture and norms



1. Governance
2. Culture and norms





Committees

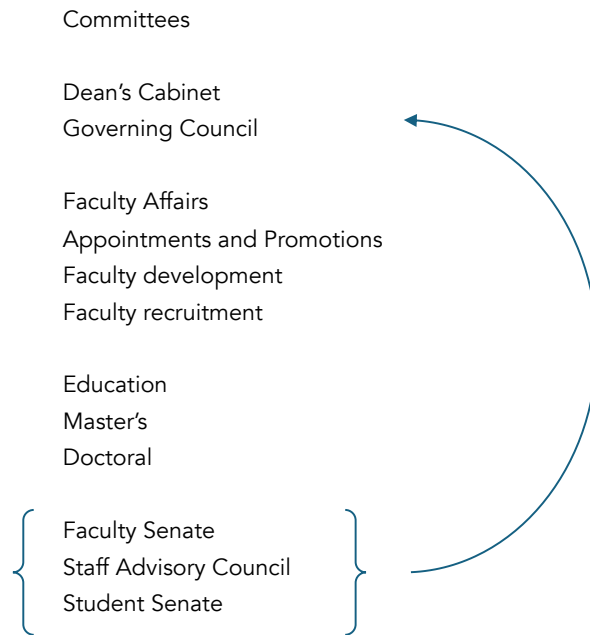
Dean's Cabinet
Governing Council

Faculty Affairs
Appointments and Promotions
Faculty development
Faculty recruitment

Education
Master's
Doctoral

Faculty Senate
Staff Advisory Council
Student Senate





1. Governance
2. Culture and norms



Regular meetings

School Assemblies

Faculty breakfasts

Staff breakfasts

Student coffee chats

ESI mentoring conversations (part of faculty development)

Regular events

Thinking public health

Talking public health

Our values

The School of Public Health is committed to excellence, hard work, compassion, and integrity. We aspire to an optimistic, inclusive community — of faculty, staff, students, alumni, and friends of the school — that is pragmatically focused on advancing our shared mission.



Our values

The School of Public Health is committed to **excellence, hard work, compassion, and integrity**. We aspire to an optimistic, inclusive community — of faculty, staff, students, alumni, and friends of the school — that is pragmatically focused on advancing our shared mission.

Excellence, faculty and staff development programs

Hard work, a community that celebrates and rewards excellence, we will reply to all emails within 1 business day

Compassion, a responsive people-first approach, annual reviews to nurture success

Integrity, we will communicate honestly, at least weekly, available for other meetings as needed



Our values

The School of Public Health is committed to excellence, hard work, compassion, and integrity. We aspire to an **optimistic, inclusive** community — of faculty, staff, students, alumni, and friends of the school — that is **pragmatically** focused on advancing our shared mission.

Optimistic, we will try to say yes, we are building for the day after tomorrow

Inclusive, we are paying careful attention to who joins our community, and expanding our lens for who should be in it

Pragmatic, we will make decisions about what can succeed, what to invest in



4. The work to be done, a list

1. Faculty + staff

Finalizing inaugural faculty
Committees
Establishing physical footprint
Preparing for next year's round of hiring

2. Nurturing teachers + students

Accreditation
Re-imagining education

3. Public health plus

Secondary faculty engagement
Innovation Research Networks

4. Local and global impact

Building other pieces of org chart



Strategic thinking, all-school retreat August 14



Agenda

1. Welcome
2. Dean's updates
3. Innovation Research Networks; McLean
4. Other



3. Innovation Research Networks; Professor McLean
Professor Morven McLean shared an overview of the Innovation Research Networks.

Innovation Research Networks at the School of Public Health





Establishing a Network of Networks

An ecosystem that catalyzes innovation in the research, education, and public service missions of the university to...

- Achieve research excellence
- Cultivate collaborative research agendas
- Incubate opportunities for innovative teaching and learning
- Identify and implement solutions



Governance Principles

The SPH serves as a steward of the cross-university research networks and shall house networks that will be led under principles of shared governance:

- Shared leadership
- Transparency
- Equity and inclusion
- Strategic alignment
- Accountability



Network Leadership

Each network will be co-directed by a faculty member from SPH and a faculty member(s) from another WashU school.

Co-directors have a shared responsibility to:

- Provide leadership and direction to network members.
- Ensure adherence to the Network Governance Principles.
- Actively foster inter-disciplinary research and multi-sectoral engagement.
- Promote interaction and engagement across the broader SPH and WashU communities.
- Lead strategic planning for the network.
- Effectively steward network resources.
- Prepare an annual report.

Innovation Research Networks (IRNs)

Dissemination
&
Implementation
Science

Policy,
Structures &
Solutions (PS2)

Planetary
Health

Food &
Agriculture
Research
Mission (FARM)

Global Health
Futures

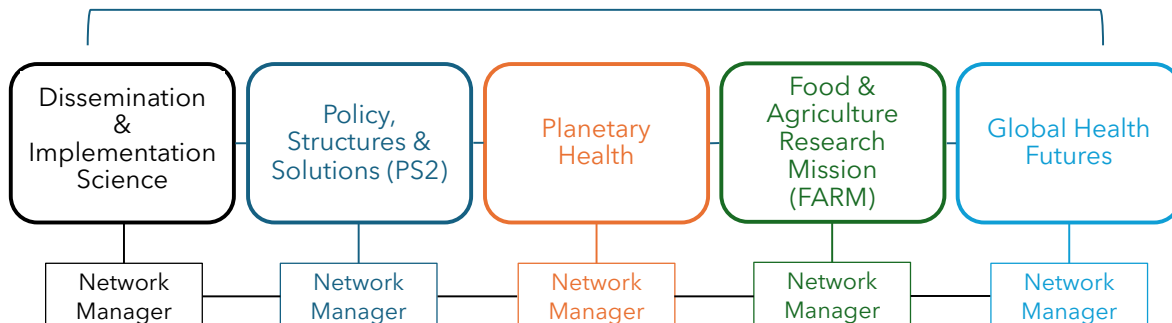


Innovation Research Network Co-Directors

| IRN | SPH Co-Director | Non-SPH Co-Director |
|--|-----------------|---|
| Dissemination & Implementation Science | Ross Brownson | Byron Powell (Brown School) Elvin Geng (WashU Medicine) |
| Global Health Futures | Salma Abdalla | Mark Huffman (WashU Medicine) Victor Davila-Roman (WashU Medicine) |
| Policy, Structures and Solutions (PS2) | Tim McBride | Karen Joynt Maddox (WashU Medicine) |
| [Planetary Health] | TBD | Dan Giammar (McKelvey School of Engineering) |
| FARM | Lora Iannotti | TBD |

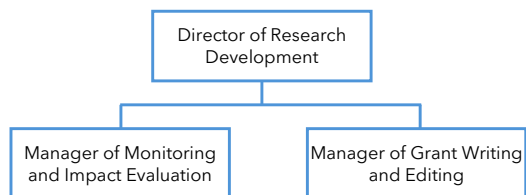
IRN Organization

Executive Director, Networks and Innovation & IRN Co-Directors

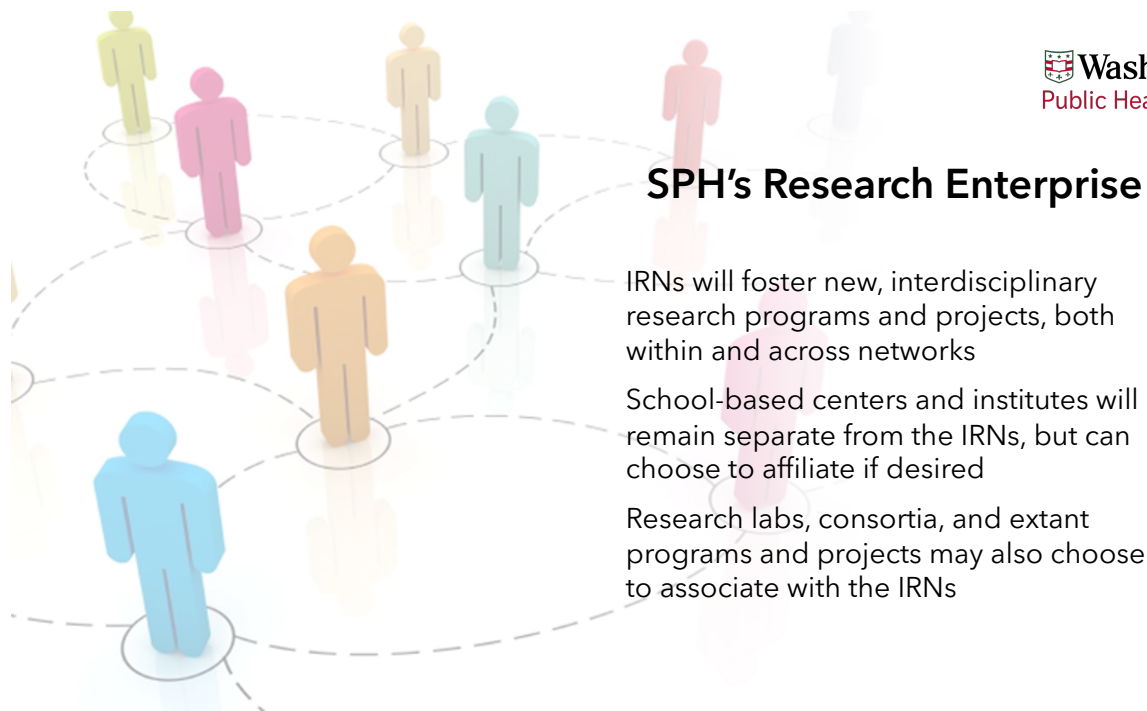
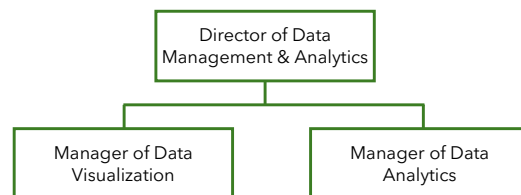


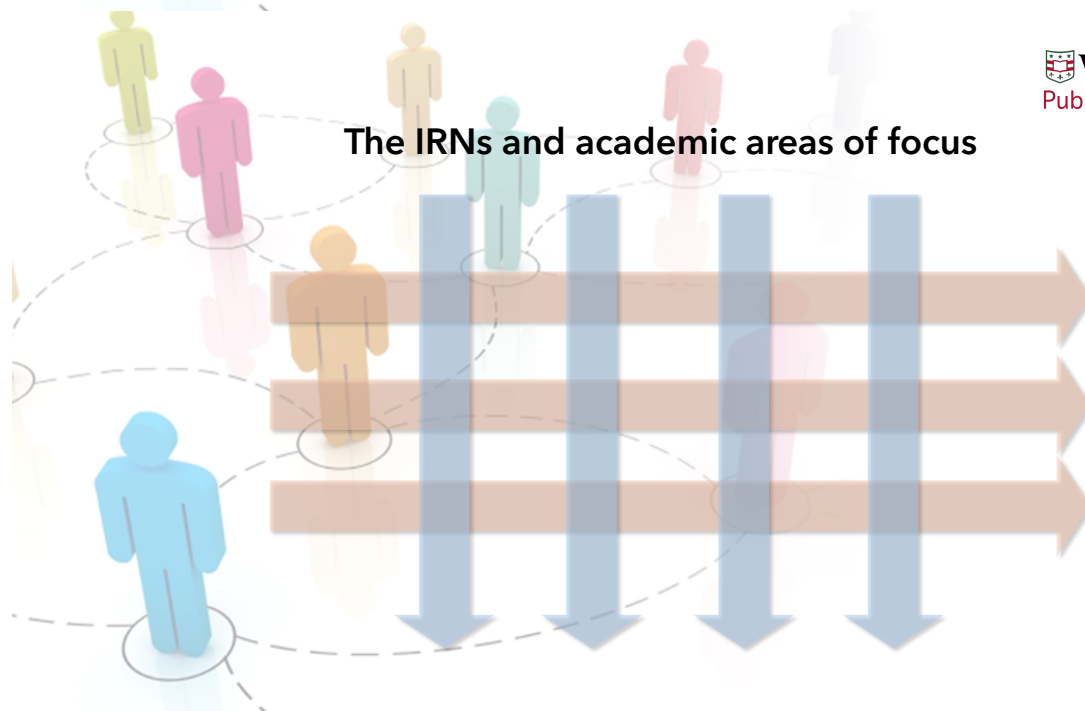
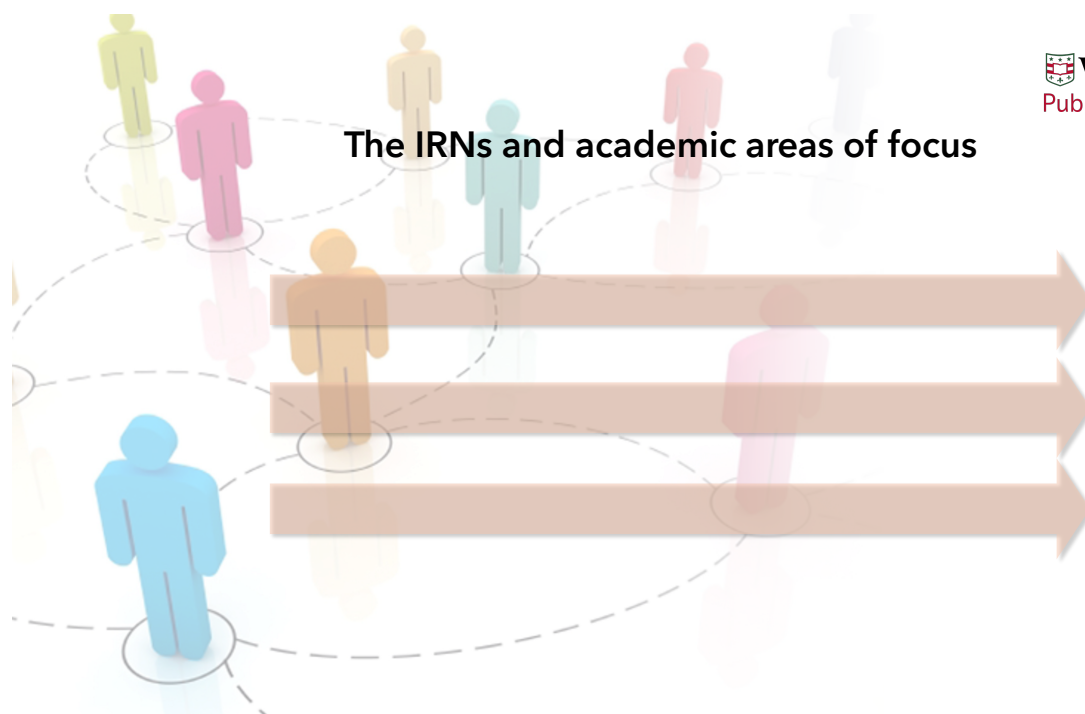
IRN Shared Resources

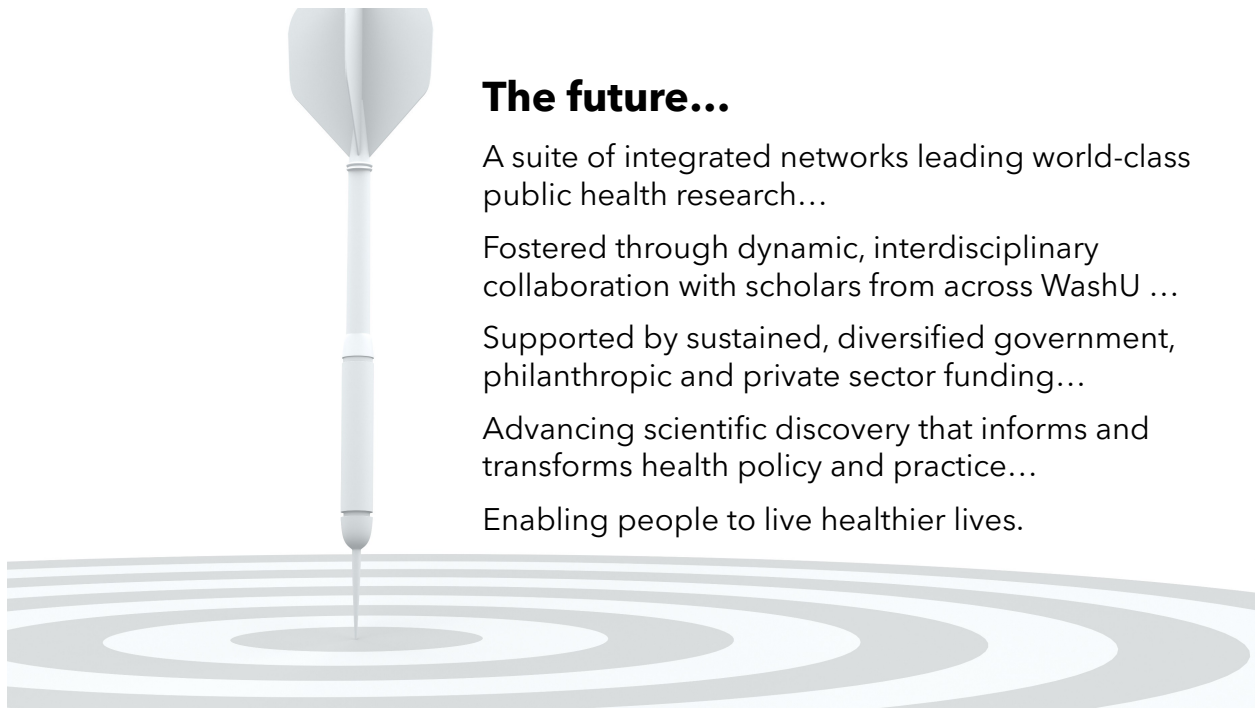
RESEARCH DEVELOPMENT



DATA MANAGEMENT AND ANALYTICS







The future...

A suite of integrated networks leading world-class public health research...

Fostered through dynamic, interdisciplinary collaboration with scholars from across WashU ...

Supported by sustained, diversified government, philanthropic and private sector funding...

Advancing scientific discovery that informs and transforms health policy and practice...

Enabling people to live healthier lives.

4. Other

Dean Sandro Galea shared additional updates before closing out the session.

Agenda

1. Welcome
2. Dean's updates
3. Innovation Research Networks; McLean
4. Other





Thank you

