

School Assembly Notes

November 11, 2025

1. Welcome
2. Dean's updates
3. Resources for faculty for education; Angela Hobson
4. Our student enrollment strategy; Caroline Clasby
5. Faculty Senate update; Rodrigo Reis
6. Staff Advisory Council update; Leah Kemper
7. Other



1. Welcome

Dean Sandro Galea (sgalea@wustl.edu) welcomed attendees to the School of Public Health assembly.

School Assembly

October 11, 2025

Agenda

1. Welcome, Dean's updates
2. Resources for faculty for education; Angela Hobson
3. Our student enrollment strategy; Caroline Clasby
4. Pre-/post-award research structure and function; Susan Vorkoper, Christy Potthast
5. Faculty Senate update; Rodrigo Reis
6. Staff Advisory Council update; Leah Kemper
7. Other

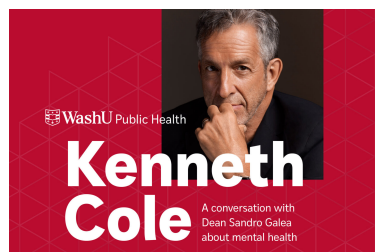


2. Dean's updates

Dean Sandro Galea shared school-wide updates.

Agenda

1. Welcome, Dean's updates
2. Resources for faculty for education; Angela Hobson
3. Our student enrollment strategy; Caroline Clasby
4. Pre-/post-award research structure and function; Susan Vorkoper, Christy Potthast
5. Faculty Senate update; Rodrigo Reis
6. Staff Advisory Council update; Leah Kemper
7. Other



Heard on social

“Most people I tell I was giving a talk at St. Louis, Missouri, a week ago — the first reaction is a frown, then a 'Who is there?' And that is the beauty of the food-system movement we have all helped build — incredible ideas are cropping up everywhere, and WashU School of Public Health has started the first-ever FARM in a school of public health. This is something we have tried to do with Governments and across different NGOs with little success.”

Agnes Kalibata, PhD, founder and chair, Connect for Impact Advisory Group (C4Impact), and keynote speaker at WashU Public Health's [FARM Food Futures Forum](#), in a [LinkedIn post](#).

300 in-person attendees

32 countries on five continents

More than 100 institutions

Two-thirds of participants had never been to St Louis before



Despite conflict and poverty, participatory approach to school improvement works

Community-based intervention in Afghanistan improved academic outcomes, life skills, especially for girls

By [Tamara Schneider](#) | October 24, 2025



Jean-Francois Trani, PhD, (center) a professor at WashU School of Public Health in St. Louis, sits with a teacher, student and parent during a workshop at a school in Ghazni, Afghanistan. Trani led a study to evaluate whether community-based interventions can improve the quality of education at Afghan primary schools and thereby enhance children's academic outcomes and life skills. (Photo courtesy of Jean-Francois Trani)

PUBLIC HEALTH NEWS PUBLIC HEALTH PEOPLE

A conversation with applied practice director Kate Barbier

Barbier works to arrange practicum programs that help shape students' paths in public health

By [Hayley Abshear](#) | October 31, 2025



Kate Barbier, MPH, MSW, director of the Office of Applied Practice at WashU Public Health, helps provide students with learning experiences that help shape their paths in public health. (Photo: Zachary Linhares/WashU Public Health)



Our priorities, aligned with our 4x4 strategies, not in order of importance

1. Recruit new faculty and staff to the school
2. Shepherd innovative new curricular changes, increase and diversify our students
3. Elevate, encourage, and create the path for innovative interdisciplinary scholarship
4. Establish an Office of Practice

Underlying all this is the foundational work on structures and systems





3. Resources for faculty for education; Angela Hobson

Associate dean for education, Angela Hobson (hobsona@wustl.edu) presented resources for faculty for education.

Agenda

1. Welcome, Dean's updates
2. Resources for faculty for education; Angela Hobson
3. Our student enrollment strategy; Caroline Clasby
4. Pre-/post-award research structure and function; Susan Vorkoper, Christy Potthast
5. Faculty Senate update; Rodrigo Reis
6. Staff Advisory Council update; Leah Kemper
7. Other





WashU

Public Health

Teaching and Education Resources

Student Enrollment Strategies

Angela Hobson, Associate Dean of Education

Caroline Clasby, Director of Admissions and Recruitment

Outline



Office of Education



Teaching and Education Resources



Admissions and Recruitment



Quick Survey for Input on Doctoral Students



Office of Education

The Office of Education aims to recruit, support, and prepare public health scholars so that they may meaningfully engage in careers that advance population health in the communities they serve.



Photo: Brown School Office of Communications

Office of Education



Academic

Doctoral Programs
Master's Programs
Student Applied Practice
Entrepreneurship in Public Health
Prof. Development/Cont. Education



Administrative

Admissions and Recruitment
Student Affairs and Engagement
Academic Records and Registration



Teaching and Education Resources

1. [Course Design & Documentation](#)
2. [Inclusive Teaching & Faculty Development](#)
3. [Student Feedback & Course Evaluations](#)
4. [Educational Technology & Classroom Support](#)
5. [Instructional Support & Mentored Teaching](#)
6. [Applied Practice & Experiential Learning](#)
7. [Student Support & Success](#)
8. [Communication & Academic Operations](#)
9. [Academic Governance & Continuous Improvement](#)
10. [Recognition & Incentives for Teaching Excellence](#)

Course Design and Documentation

Purpose: Ensure consistent, SPH and CEPH aligned, student-ready courses each term.

Resources: [SPH Teaching and Education Resources](#)

1. [SPH syllabus template](#)
2. [Syllabus updating guide](#)
3. [Previously submitted syllabi](#)
4. [Foundational & concentration competencies](#) .
5. [New course proposal form](#)



Inclusive Teaching & Faculty Development

Purpose: Engagement in professional development, elevate pedagogy, foster inclusive teaching and learning environment

Resources:

1. WashU Center for Teaching and Learning (CTL)

- a) [Consultations](#) and [Observations](#)
- b) Workshops and Programs: See [events](#) page and subscribe to [newsletter](#).
- c) [Inclusive Teaching and Learning](#):
- d) [Course Design and Evaluation](#) and [Instructional Strategies](#).

Inclusive Teaching & Faculty Development cont.

2. SPH

- a) [SPH Teaching Toolbox](#) — Box folder with teaching tips, active learning strategies, inclusive practices.
- b) SPH Scholarship of Teaching and Learning (SOTL) group
 - a) Teaching Orientation & Mid-Semester Check-In
 - a) Spring 2026 Teaching Orientation: December 8, 4-5 p.m., Zoom
 - b) Faculty Advising/Mentorship
 - a) Training, at least once annually
 - b) [MPH faculty advising document](#)
 - c) [PhD student mentoring guide](#)



Student Feedback & Course Evaluations

Purpose: Evaluate teaching strategies, course content, & student learning experience.

Resources:

1. Formal: Course Evaluations – mid-term and at the end of the semester.
 - a) WashU [course evaluation system and dashboard](#)
 - b) CTL [overview](#) for making the most out of course evaluations
2. Informal: Use [this guide](#) for tips on collecting student feedback

Educational Technology & Classroom Support

Purpose: Support course management and classroom technology

Resources:

1. Learning Management System: Canvas
 - a) [Support](#) for learning Canvas, Issues with Canvas: Submit a [ServiceNow ticket](#).
2. Educational Technology (EdTech) Tools:
 - a) Get 1-on-1 help: email edtechtools@wustl.edu, [schedule a consultation](#), or call 314-935-6810.
 - b) Workshops: See [events](#) page and subscribe to [newsletter](#).
3. Classroom Supplies
 - a) Contact Tish Torian (torian@wustl.edu) or stop by Hillman Hall Suite 150.



Instructional Support & Mentored Teaching

Purpose: Expand teaching capacity while developing future educators.

Resources:

1. Nurturing Future Teachers —
 - a) pairs second-year MPH (paid) and doctoral students (program-required) with courses enrolling >20 students;
 - b) applications open October (for spring) and April (for fall);
 - c) matching & hiring by the Office of Education

Applied Practice & Experiential Learning

• Purpose: Create practice- and research-based learning pathways.

Resources:

1. Student Applied Practice
 - a) 3 credits/360 hours practicum
2. Nurturing Future Researchers (NFT)
 - a) 10, one-year SPH-funded research assistants



Student Support & Success

Purpose: Address academic and other concerns early and connect students to wellbeing resources.

Resources:

1. [Early Alert](#) — submit concerns about attendance or performance;
2. [WashU Cares](#) — report concerns about personal, physical, or emotional wellbeing
3. Katharine Pei, Associate Dean for Student Affairs: kpei@wustl.edu

Communication & Academic Operations



Public Health Education Weekly

August 19, 2025

"Firsts are best because they are beginnings." – Jenny Han

From the Associate Dean of Education

Dear Students,

- Public Health Education Weekly (newsletter) – sent every Tuesday to all SPH students; includes deadlines, events, opportunities. Faculty/staff can opt-in. Submit items to Angela Hobson or Tish Torian by Thursday 5 p.m. prior.



Academic Governance & Continuous Improvement

Purpose: Ensure curricular coherence, policy stewardship, and program quality.

Education Committee

- a) oversees curriculum and academic policies; evaluates outcomes; proposes changes to degrees/courses and manages education awards.

Master's & Doctoral Education Sub-committees

Recognition & Incentives for Teaching Excellence

Purpose: Recognize and celebrate excellence in teaching, advising, and mentoring

Resources:

- Annual Spring Awards – more to come!



4. Our student enrolment strategy; Caroline Clasby

Caroline Clasby (clasby@wustl.edu), Director of Admissions and Recruitment, presented an update on student enrollment strategy.

Agenda

1. Welcome, Dean's updates
2. Resources for faculty for education; Angela Hobson
3. Our student enrollment strategy; Caroline Clasby
4. Pre-/post-award research structure and function; Susan Vorkoper, Christy Potthast
5. Faculty Senate update; Rodrigo Reis
6. Staff Advisory Council update; Leah Kemper
7. Other

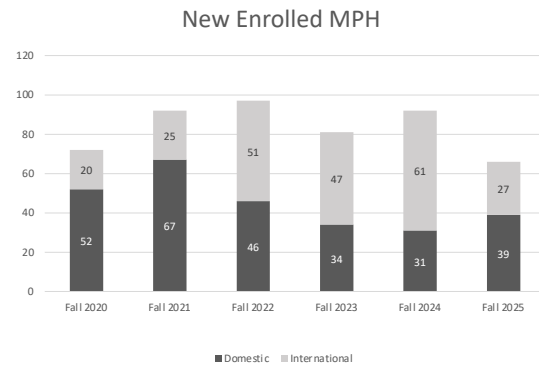
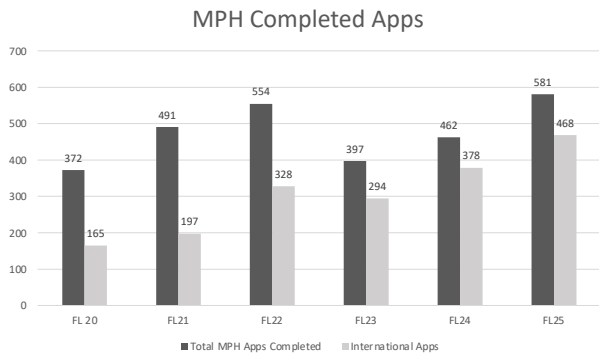


Student Enrollment Strategies

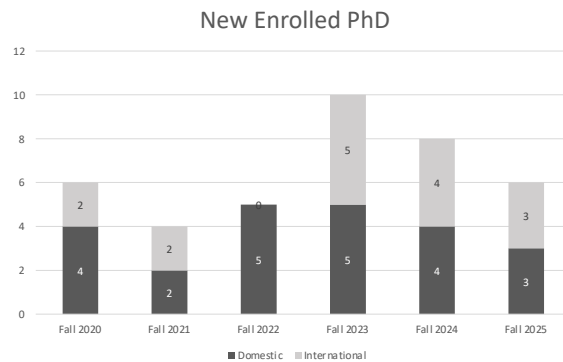
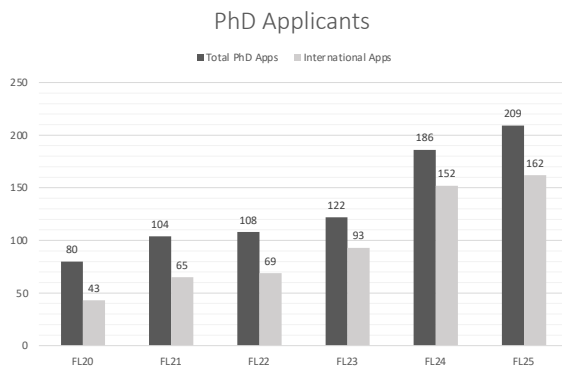
Caroline Clasby,
Director of Admissions and Recruitment



MPH Numbers



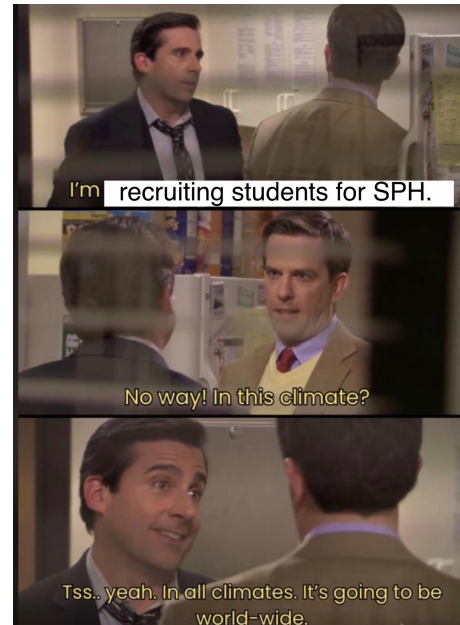
PhD Numbers



Future Goals

- **1 Year**
 - Increase of 10-15% new enrolled MPH students
- **2 Years**
 - 150 new enrolled MPH students
- **5-7 Years**
 - 400 new enrolled MPH students

*As we increase enrollment, we will move to make the domestic vs international a more sustainable ratio of 60/40 or 70/30 with domestic being the majority.



What are students saying?

Each year a decline survey is sent out to prospective public health students asking why they did not choose WashU. Here are the three top reasons:

1. Financial
2. Location
3. Academic Fit





New Scholarships and Assistantships

- Dean's Merit Scholarship
- In St. Louis, For St. Louis Scholarship
- Show Me State Scholarship
- Heartland Scholarship
- 3+2 Program Scholarship
- Veterans Appreciation Scholarship
- Global Scholarship
- Alumni Scholarship
- Nurturing Future Teachers
- Nurturing Future Researchers



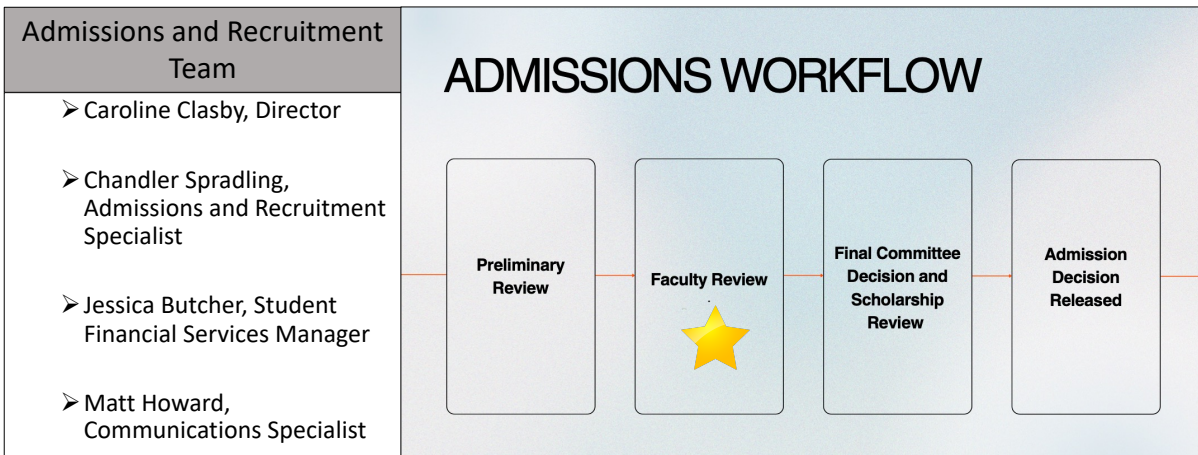
[This Photo](#) by Unknown Author is licensed under [CC BY-SA](#)

Academic Fit

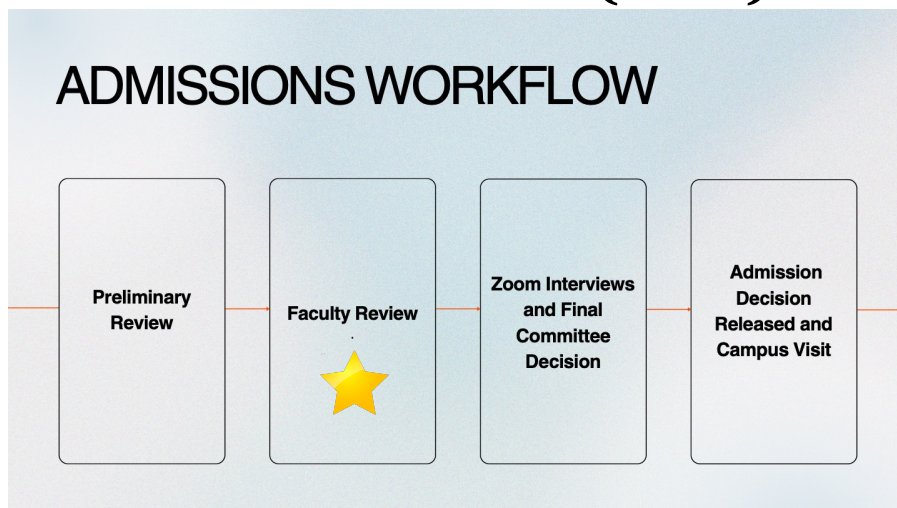
- Concentrations
 - Evaluating our current concentrations and their alignment with faculty and student interest.
- Curriculum
 - Re-thinking curriculum, credits and longevity of program
- Modalities
 - Long-term goals: In-person, hybrid, and fully remote degrees



New Processes (MPH) and Infrastructure



New Processes (PhD)



Let's go!

What makes a doctoral graduate exceptional?



Photo: Brown School Office of Communications



5. Faculty Senate update; Rodrigo Reis

Rodrigo Reis (reis.rodrico@wustl.edu), Faculty Senate chair, shared updates from the Faculty Senate.

Agenda

1. Welcome, Dean's updates
2. Resources for faculty for education; Angela Hobson
3. Our student enrollment strategy; Caroline Clasby
4. Pre-/post-award research structure and function; Susan Vorkoper, Christy Potthast
5. Faculty Senate update; Rodrigo Reis
6. Staff Advisory Council update; Leah Kemper
7. Other

Faculty Senate update

1. Faculty Senate composition
 - a. Derek Brown, Ragini Maddipati, Sarah Moreland-Russell, Rodrigo Reis, Ilana Seff, and Jean-François Trani (Faculty)
 - b. Sydney Zarate Sada (Staff support)
2. School Survey
 - a. Engaged and provided input in the survey
 - b. The survey will guide priorities for 2026
3. Bylaws
 - a. A draft under final review
 - b. Final document to be available by the end of the calendar year



6. Staff Advisory Council update; Leah Kemper

Leah Kemper (kemper@wustl.edu), Staff Administrative Advisory Council chair, shared updates from the Staff Administrative Advisory Council.

Agenda

1. Welcome, Dean's updates
2. Resources for faculty for education; Angela Hobson
3. Our student enrollment strategy; Caroline Clasby
4. Pre-/post-award research structure and function; Susan Vorkoper, Christy Potthast
5. Faculty Senate update; Rodrigo Reis
6. Staff Advisory Council update; Leah Kemper
7. Other



Staff Administrative Advisory Council update

Leah Kemper, Chair



Staff Administrative Advisory Council updates

- October 10th meeting
 - Reviewed Charge of Council
 - Broadly charged with considering and recommending action, as appropriate, on all matters affecting the professional concerns of the SPH staff and may examine and recommend action on broad issues affecting the general SPH and University community
 - Reviewed SPH all-school survey and the following feedback was provided
 - Edits suggested to identify or reframe questions to better reflect staff experiences
 - Changes suggested to obtain additional feedback on staff development opportunities
 - Additional information was needed for respondents to differentiate between SPH and Shared Business Services when answering questions

Staff Administrative Advisory Council updates

- November 7th meeting
 - SAAC bylaws
 - Reviewed the SAAC bylaws and suggested minor edits to the current draft
 - Revised version to be reviewed at the next meeting
 - Staff Development
 - Developing recommendations for the SPH
 - Review of opportunities available across the university
- Next meeting: Thursday, November 20th
 - Reach out to Leah Kemper (kemper@wustl.edu) with items/topics for consideration by the council



7. Other

Dean Sandro Galea welcomed attendees to share any addition updates before closing out the session.

Agenda

1. Welcome, Dean's updates
2. Resources for faculty for education; Angela Hobson
3. Our student enrollment strategy; Caroline Clasby
4. Pre-/post-award research structure and function; Susan Vorkoper, Christy Potthast
5. Faculty Senate update; Rodrigo Reis
6. Staff Advisory Council update; Leah Kemper
7. Other

